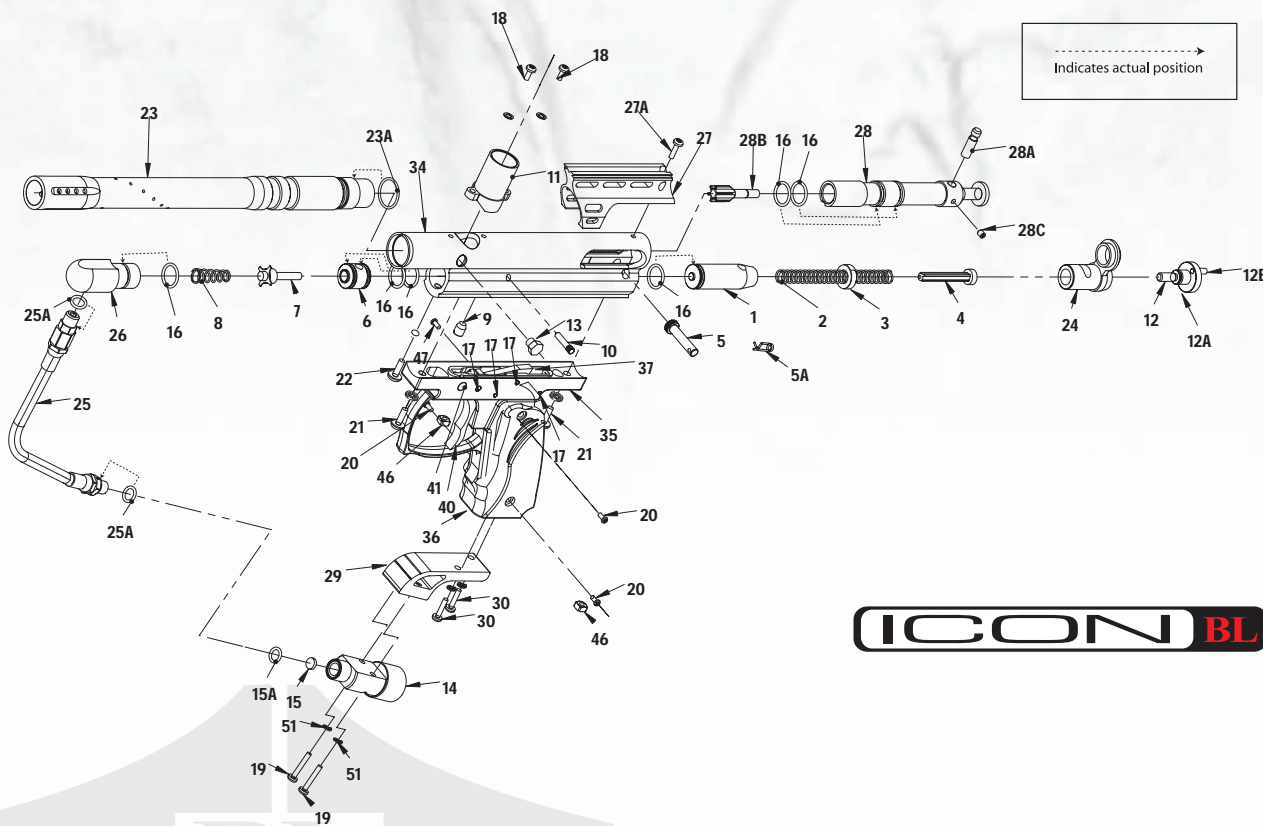


# ICON BL

Icon BL Schematic



**ICON BL**

## NPS EXCLUSIVE PARTS



Order schematics parts online at  
[www.paintballsolutions.com](http://www.paintballsolutions.com) or call  
 1-800-220-3222

### ICON BL Parts List

- |                          |                            |                             |                     |
|--------------------------|----------------------------|-----------------------------|---------------------|
| 1. Hammer                | 13. Metal Ball Detent      | A. Gas Line O-Ring          | *38. Sear Spring    |
| 2. Main Spring           | 14. Tank Adapter           | 26. Low Pressure Chamber    | *39. Trigger Spring |
| 3. Recoil Pad            | 15. Air Filter             | 27. Sight Rail              | 40. Trigger         |
| 4. Spring Strut          | A. Air Filter O-Ring       | A. Sight Rail Screws        | 41. Safety Assembly |
| 5. Quick Strip Pin       | 16. Multi-Use O-Ring       | 28. Bolt                    | 46. Drop Forward    |
| A. R-Clip                | 17. Grip Frame Pin Set     | A. Connecting Pin           | Re-Tension Nut      |
| 6. Gas Valve             | 18. Vertical Feed Screws   | B. Venturi Insert           |                     |
| 7. Cupseal               | 19. Bottomline Screws      | C. Connecting Pin Set       |                     |
| 8. Valve Spring          | 20. Grip Panel Screws      | Screw                       |                     |
| 9. Valve Gas Plug        | 21. Grip Frame Screws      | 29. Drop Forward            |                     |
| 10. Valve Stop Pin       | 22. Vertical ASA Screw     | 30. Drop Forward Screws     |                     |
| 11. Vertical Feed Neck   | 23. Barrel                 | 34. Main Body               |                     |
| 12. Velocity Adjuster    | A. Barrel O-Ring           | 35. Grip Frame              |                     |
| A. Anti-Vibration O-Ring | 24. Hammer/Bolt Plug       | 36. Wrap Around Grip Panels |                     |
| B. Locking Set Screw     | 25. Steel Braided Gas Line | 37. Sear                    |                     |

**ICON BL**



\*Not Shown In Schematic.