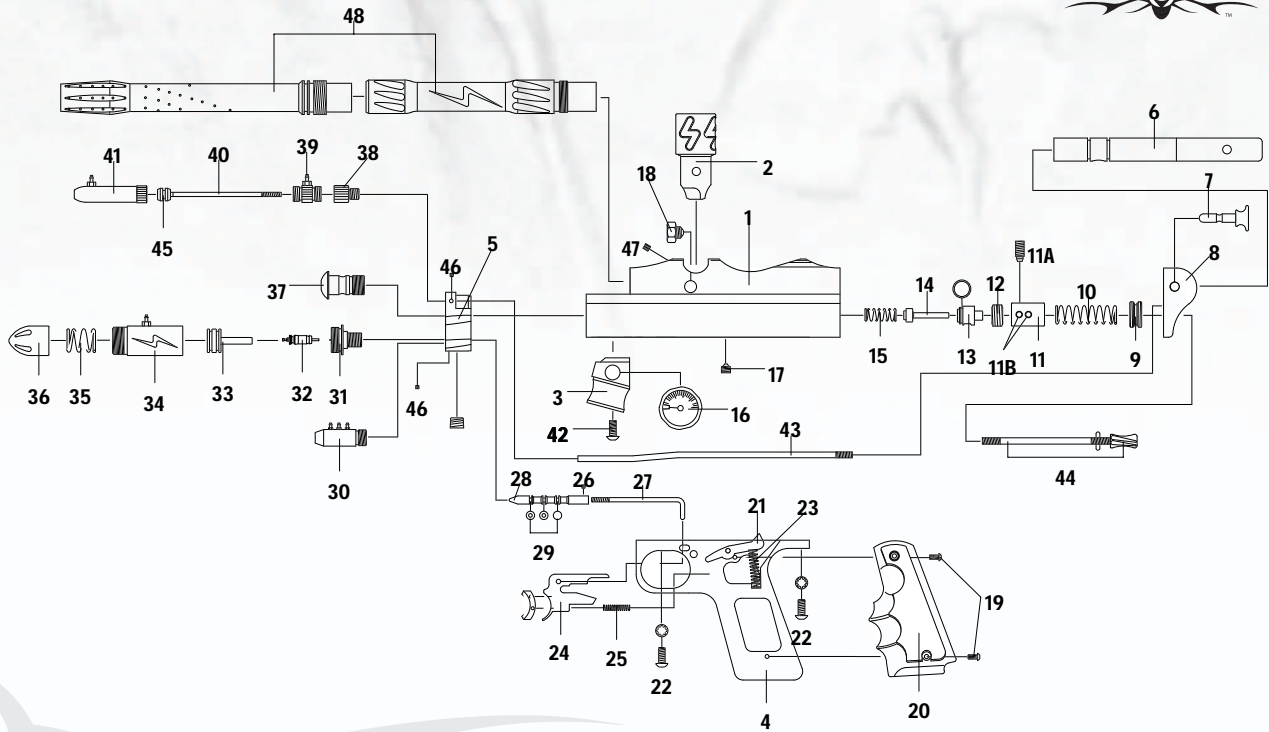


LIGHTNING

Lightning Schematic

psychoballistics



NPS PARTS



Order schematics parts online at www.paintballsolutions.com or call 1-800-220-3222

NPS EXCLUSIVE PARTS

Lightning Parts List

- | | | |
|--------------------------|----------------------------------|----------------------------|
| 1. Main Body | 19. Grip Panel Screws | 39. Ram Air Adapter |
| 2. Feed Neck | 20. Wrap Around Grip | 40. Ram Rod |
| 3. ASA | 21. Sear Plate | 41. Ram Front Body |
| 4. Grip Frame | 22. Grip Frame Screws | 42. ASA Screw |
| 5. Front Block | 23. Sear Spring | 43. Pump Arm |
| 6. Delrin Bolt | 24. Trigger Plate | 44. Cocking Rod |
| 7. Pull Pin | 25. Trigger Spring | 45. Ram Plunger w/O-Ring |
| 8. Back Block | 26. 3-Way Set Screw | 46. Front Block Set Screw |
| 9. Velocity Adjuster | 27. Actuating Rod | 47. Feed Neck Set Screw |
| 10. Main Spring | 28. 3-Way Stem and O-Rings | 48. Two-Piece Stock Barrel |
| 11. Hammer | 29. 3-Way O-Rings | |
| A. Hammer Lug | 30. 3-Way Body | |
| B. Hammer Set Screws | 31. LPR Block Adapter | |
| 12. Lock Nut | 32. Low Pressure Regulator Valve | |
| 13. Gas Valve | 33. Regulator Plunger | |
| 14. Cupseal | 34. Regulator Body | |
| 15. Valve Spring | 35. Regulator Spring | |
| 16. 0-1200 psi Gauge | 36. Regulator Cap | |
| 17. Gas Valve Stop Screw | 37. Jam Nut | |
| 18. Metal Ball Detent | 38. Ram Block Adapter | |

psychoballistics



Lightning



Lightning Deluxe